

# Independent Living. Garden Floor Plans.



**MOUNT  
ANGEL  
TOWERS**

Our apartments have a wide variety of floorplans to choose from. Each Garden apartment has its own patio with direct access to our landscaped grounds.

---

## Garden 2 Bedroom 750 sf

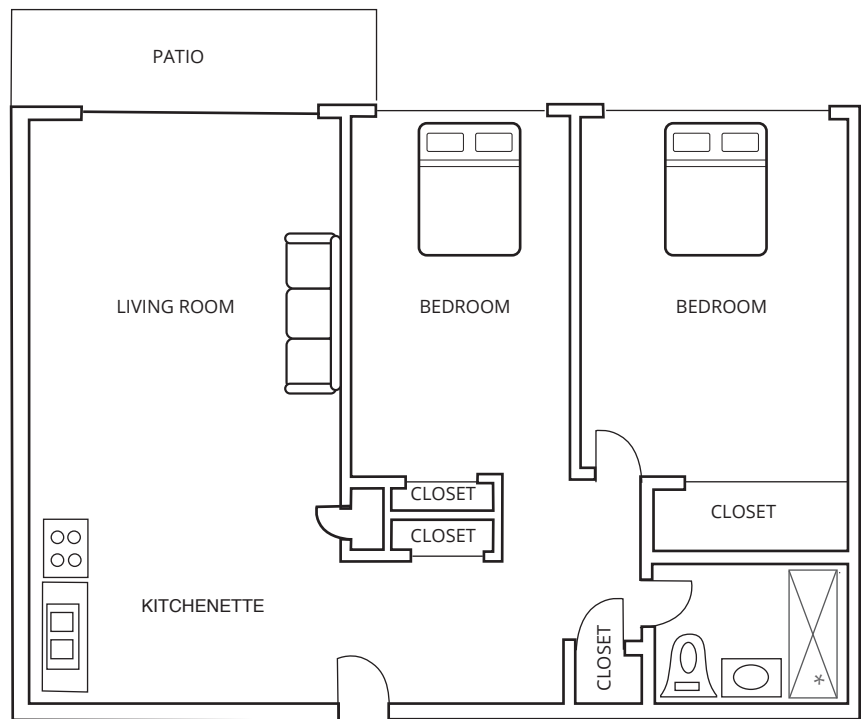
### PRICE:

---

**\$3,300 - \$3,900 per month**

---

*Price ranges quoted are as of the date the user visited the website and are subject to change at any time.*



### GARDEN APARTMENTS INCLUDE:

- Spacious closets
  - Abundant windows
  - Heat & air conditioning controlled within each unit
  - Bathrooms equipped for accessibility and safety
  - Fully-equipped kitchens
  - Pets welcome
  - Emergency call system
  - All utilities & cable tv (not phone or internet)
  - Patios that lead directly to landscaped gardens
  - Two meals per day
- 

**CALL TO BOOK A TOUR:**

503-845-7211

[www.MountAngelTowers.com](http://www.MountAngelTowers.com)