

Independent Living. Tower Floor Plans.



**MOUNT
ANGEL
TOWERS**

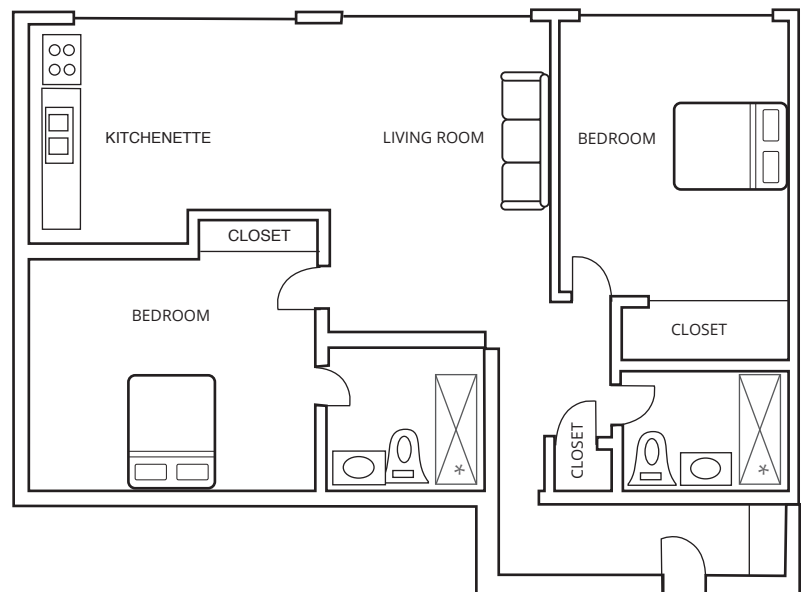
Our Tower apartments offer a beautiful town or mountain view. Some of our floor plans are shown below. Extra storage is available for those who want it.

Tower 2 Bedroom Deluxe 850 sf

PRICE RANGE:

\$3675 - \$3825 per month

Price ranges quoted are as of the date the user visited the website and are subject to change at any time.



TOWER APARTMENTS INCLUDE:

- Spacious closets
 - Heat & air conditioning controlled within each unit
 - Bathrooms equipped for accessibility and safety
 - All utilities and cable tv (not phone or internet)
 - Fully equipped kitchens
 - Abundant windows
 - Easy access to 6th floor terrace
 - Emergency call system
 - Two meals per day
-

CALL TO BOOK A TOUR:

503-845-7211

www.MountAngelTowers.com