

# Independent Living. Tower Floor Plans.



**MOUNT  
ANGEL  
TOWERS**

Our Tower apartments offer a beautiful town or mountain view. Some of our floor plans are shown below. Extra storage is available for those who want it.

---

## Tower Studio 310 sf

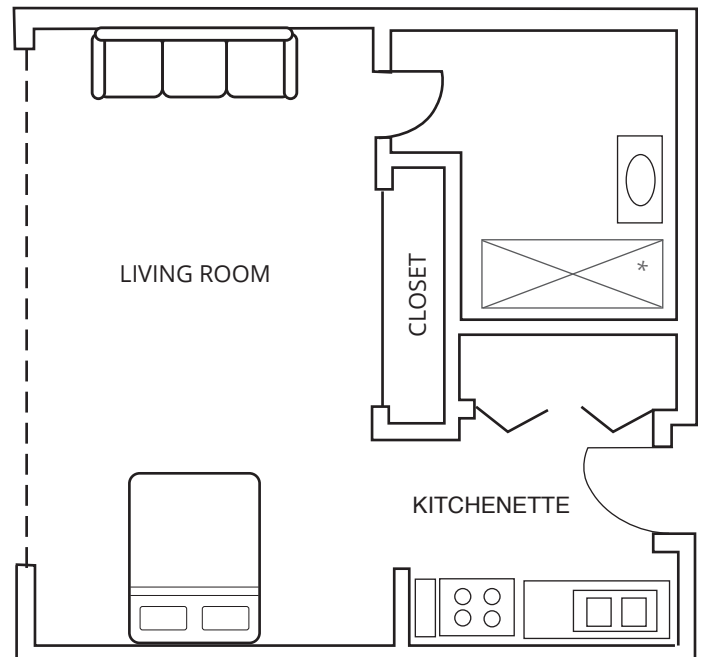
### PRICE RANGE:

---

\$2,200 - \$2,450 per month

---

*Price ranges quoted are as of the date the user visited the website and are subject to change at any time.*



### TOWER APARTMENTS INCLUDE:

- Spacious closets
  - Heat & air conditioning controlled within each unit
  - Bathrooms equipped for accessibility and safety
  - All utilities and cable tv (not phone or internet)
  - Fully equipped kitchens
  - Abundant windows
  - Easy access to 6th floor terrace
  - Emergency call system
  - Two meals per day
- 

**CALL TO BOOK A TOUR:**

503-845-7211

[www.MountAngelTowers.com](http://www.MountAngelTowers.com)